

ORIA

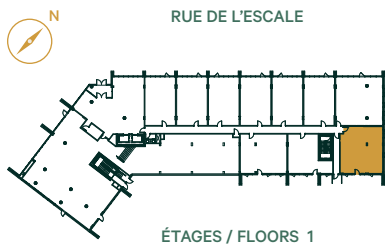
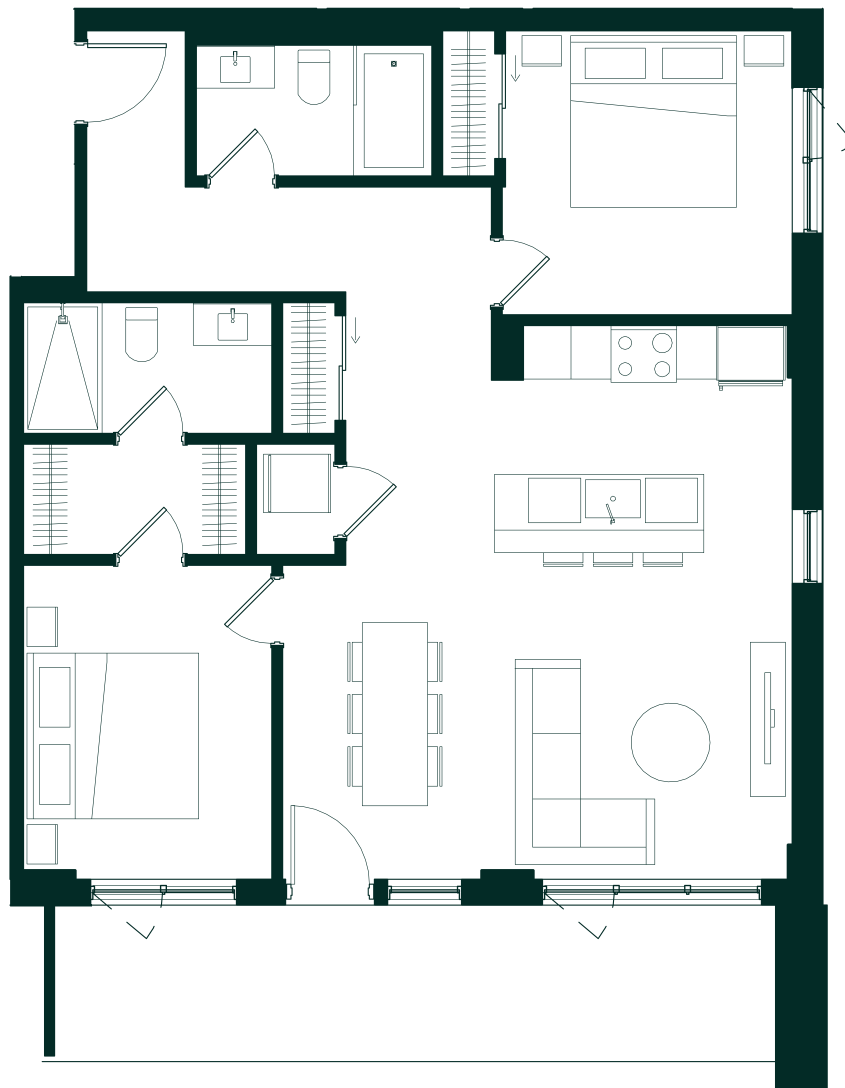
CONDOMINIUMS

B10

1018 Pl²/sq. ft.

2 CHAMBRES

UNITÉ
114



**CUISINE
KITCHEN**

7' - 1 ½" X 17' - 1"

**SALLE À MANGER
DINING ROOM**

12' X 8' - 10 ½"

**SÉJOUR
LIVING ROOM**

12' X 8' - 10 ½"

**CHAMBRE PRINCIPALE
MASTER BEDROOM**

12' X 9' - 6"

**WALK-IN ATTENANT
WALK-IN CLOSET**

8' - 6" X 4' - 2 ½"

**SALLE DE BAIN #1
BATHROOM #1**

9' - 6" X 5'

**CHAMBRE #2
BEDROOM #2**

11' - 1" X 10' - 10 ½"

**SALLE DE BAIN #2
BATHROOM #2**

9' X 5'

**ENTRÉE
ENTRANCE**

10' X 3' - 9 ½"

**BALCON
BALCONY**
21' - 7" X 6'

Oria / 2019-12-02

Plans préliminaires sujets à changements. La superficie brute des logements n'inclut pas celle des balcons et/ou terrasses. La superficie et la dimension des plans de vente sont approximatives et peuvent varier. Preliminary plans subject to modifications. The unit area excludes the balcony and/or terraces. The areas are approximate and are subject to variation.

solar
UNIQUEARTIER™

DEVIMCO
IMMOBILIER